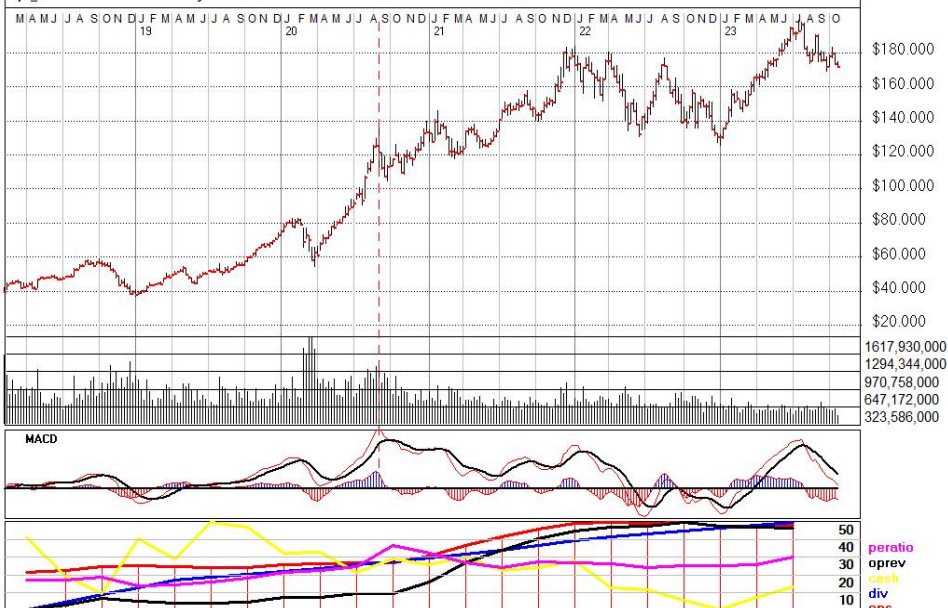


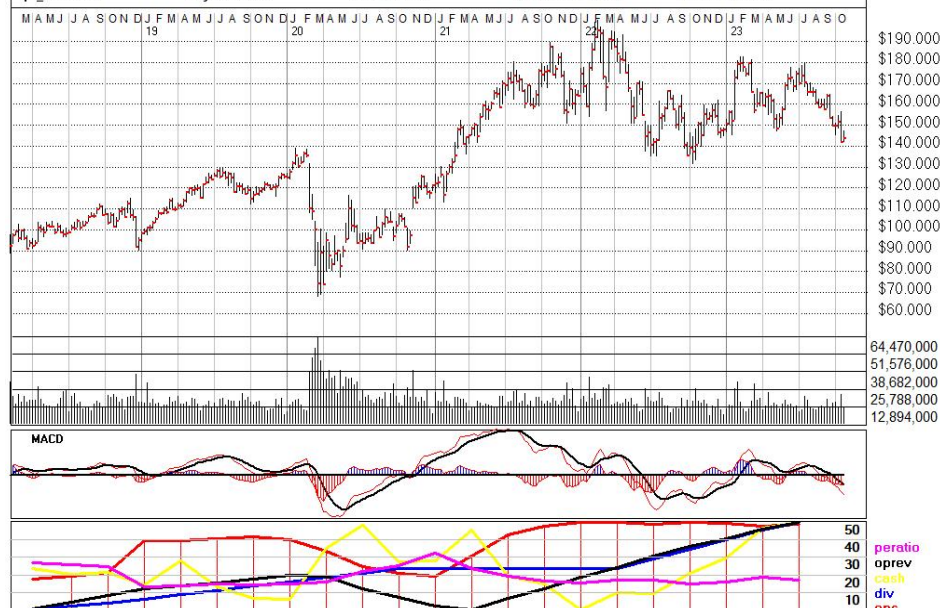
APPLE AAPL NQ

date: 10/25/2023 close: \$171.100 volume: 57064600 daychg: -1.35 % eps: 5.980
 pe_ratio: 28.61 divyield: 0.54% Issued: 15634 M TotLia: 274764.0 M Cash: 28408.0 M



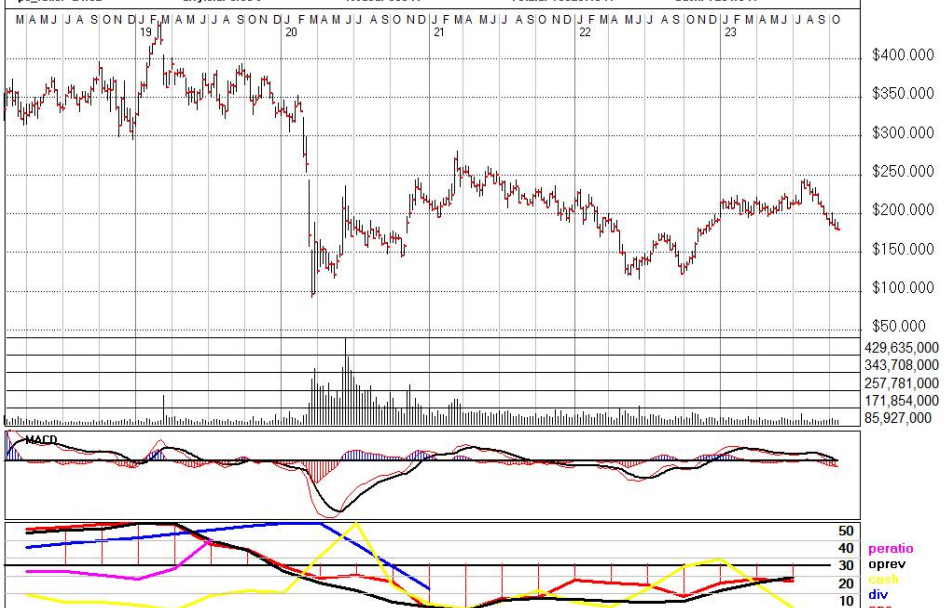
AMERICAN EXPRESS COMPANY AXP NY

date: 10/25/2023 close: \$143.520 volume: 2838400 daychg: -0.62 % eps: 10.030
 pe_ratio: 14.31 divyield: 1.51% Issued: 736 M TotLia: 218201.0 M Cash: 41976.0 M



BOEING COMPANY BA NY

date: 10/25/2023 close: \$177.730 volume: 13796200 daychg: -2.54 % eps: -7.400
 pe_ratio: -24.02 divyield: 0.00% Issued: 603 M TotLia: 150267.0 M Cash: 7254.0 M



CATERPILLAR CAT NY

date: 10/25/2023 close: \$244.940 volume: 2541700 daychg: -1.85 % eps: 16.240
 pe_ratio: 15.08 divyield: 1.96% Issued: 510 M TotLia: 67171.0 M Cash: 7387.0 M

